

LEVANTE 2017year
QUATTROPORTE 2017year
GHIBLI 2017year
(VIDEO Interface)



MODEL	MR-LVT-170925
DATE	2017.11.20

Main Spec.

1. Input Spec. (MULTI VIDEO INTERFACE)

- 1 x Analog RGB Input (Navigation System source)
- 1 x Digital RGB Input (Navigation System source)
- 1 x CVBS(REAR CAMERA) Input. (Rear camera source)
- 1 x CVBS(FRONT CAMERA) Input. (Front camera source)

2. Output Spec.

- 1 x LCD Output (LCD Operation)
- 1 x Analog Touch (Navigation System source)

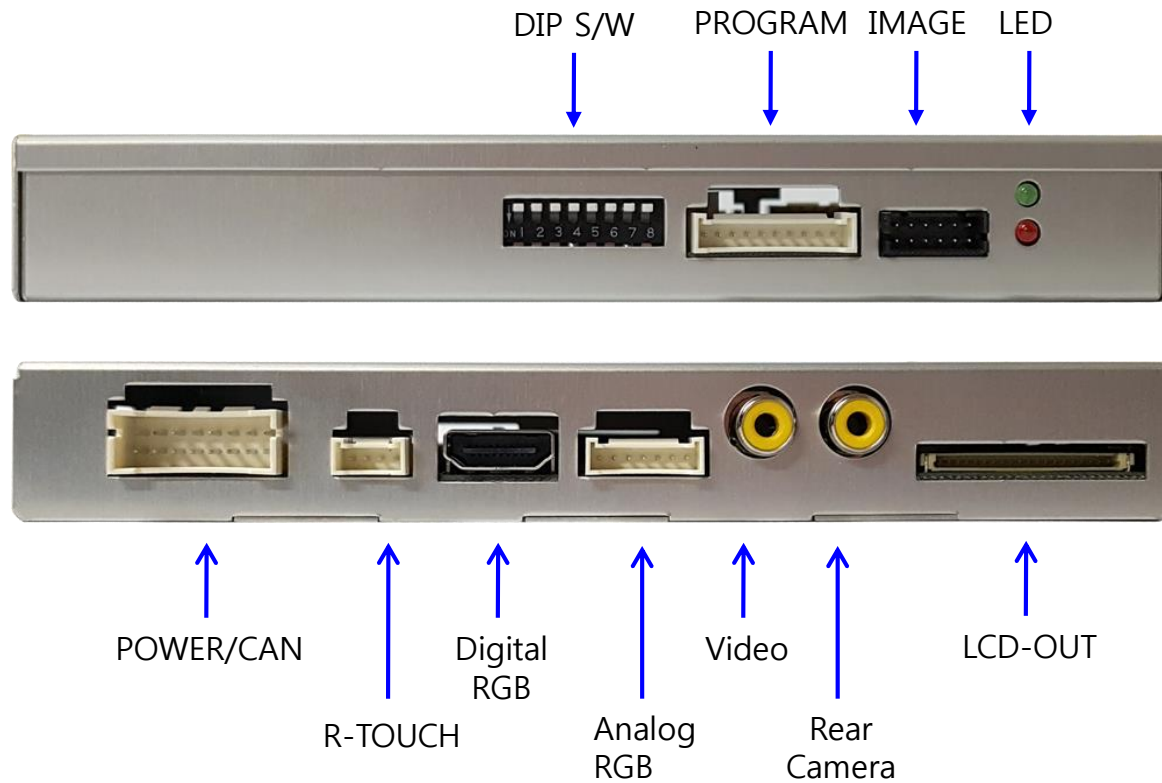
3. Power Spec.

- Input Power : 8VDC ~ 24VDC
- Consumption Power : 12Watt, Max

4. Switch Input mode

- Possible to select CAR model while switching mode by DIP S/W
- By button on the Commander in the car via CAN

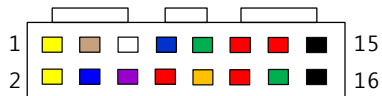
External Appearance



Connector Pin Assignment

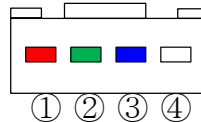


*POWER Connect



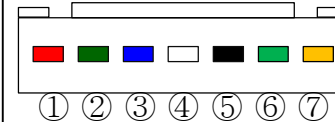
- | | |
|---------------------|---------------------|
| 1. Battery (Yellow) | 9. CAN-L (Green) |
| 2. Battery (Yellow) | 10. CAN-H (Orange) |
| 3. Rear-DET (Brown) | 11. ACC (Red) |
| 4. Front-DET (Blue) | 12. Rear-VCC (Red) |
| 5. CANin-L (White) | 13. Front-VCC (Red) |
| 6. CANin-H (Purple) | 14. Mode (Green) |
| 7. CANout-L (Blue) | 15. GND (Black) |
| 8. CANout-H (Red) | 16. GND (Black) |

*Touch Connect



- ① Y-
- ② X-
- ③ Y+
- ④ X+

*NAVI Connect

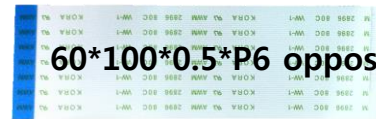


- ① R DATA (Red)
- ② G DATA (Green)
- ③ B DATA (Blue)
- ④ SYNC (White)
- ⑤ GND (Black)
- ⑥ DVB-T IR (Green)
- ⑦ DVD IR (Orange)

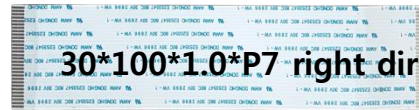
Product Composition



Interface 1 EA
FD-PAS-170327

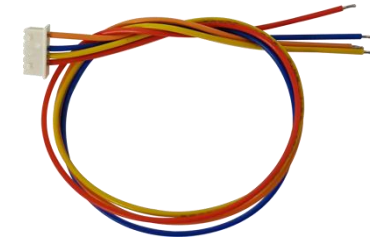


60*100*0.5*P6 opposite direction

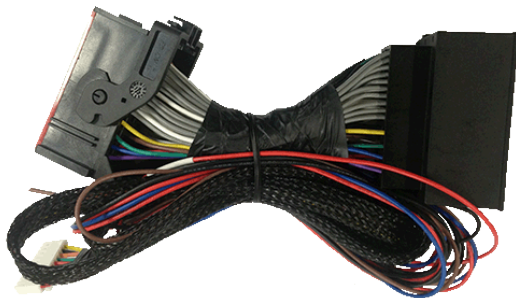


30*100*1.0*P7 right direction

LVDS FFC Cable 2 EA



Touch IN/OUT 4-pin Cable(180mm) 1 EA



Power Cable 1 EA



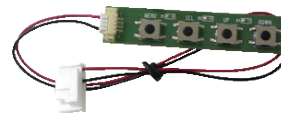
LVDS Cable(800mm) 1 EA



LVDS extension Board 1 EA



RGB NAVI Cable 1 EA



OSD Board 1 EA



SUB Board (R01) 1 EA

DIP S/W Setting

* ON : DOWN , OFF : UP

PIN	FUNCTION	DIP S/W Selection
1	NAVI	ON : Not Used OFF : Used
2	AV1 (DVB-T)	ON : Not Used OFF : Used
3	AV2 (DVD)	ON : Not Used OFF : Used
4	N.C	
5	N.C	
6	CAR type SEL	Right Picture
7		
8		

* DIP S/W Example



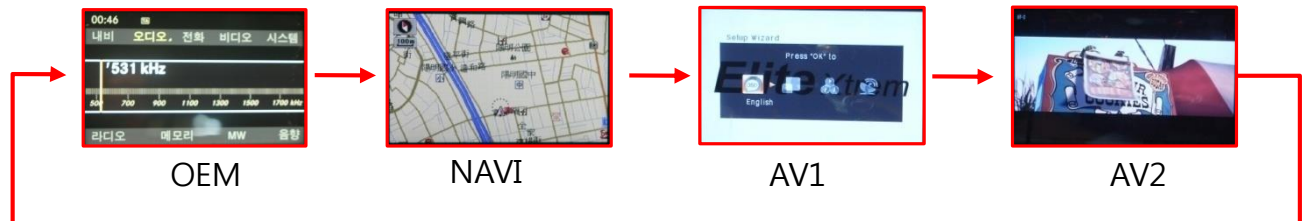
LEVANTE(2017) 8"
QUATTROPORTE(2017) 8"
GHIBLI(2017) 8"

Mode Change



Press long : switching mode
Press Short : switching to OEM directly

※The screen is switched in order as the pictures below



Mode Change

* Steering Wheel Button Control

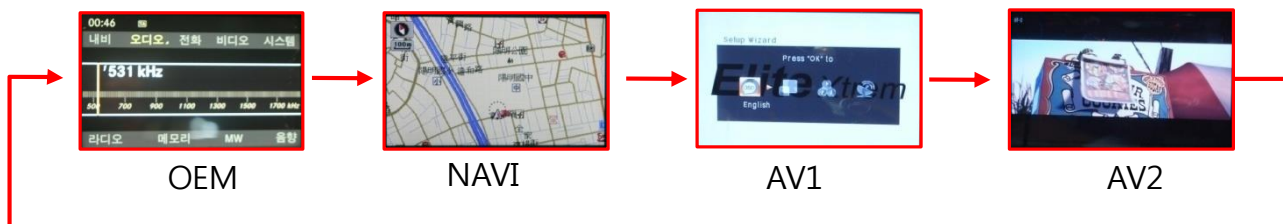


Push long – Mode Change

- Use Steering button, Enter OSD menu, and select "ON"
If not use, select "OFF"

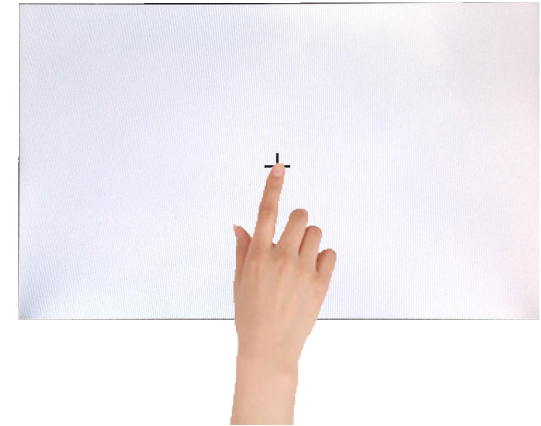
MENU	SteeringWheelBtn	NAVI
Config	FrontCam-Power	Auto
Option	FrontCam-Det	ExtWire
Image	FrontCam-RcvOpt	<input type="checkbox"/> On
Screen	SteeringWheelBtn	On Off
Parking	UI DVB-T(DMB)	On

※The screen is switched in order as the pictures below



Touch Control

Touch calibration



Push 7sec on the NAVI / AV1 / AV2 screen (just 1 screen)

Press+

Touch Control

DVB-T/DVD Control

DVB-T

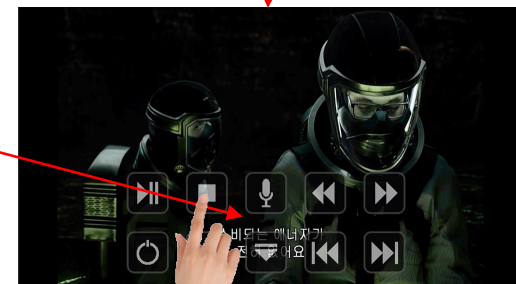


Press Touch(Anywhere)

DVD

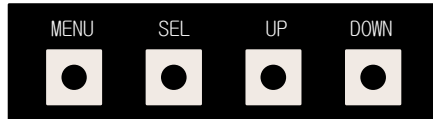


Press Icon



OSD(On Screen Display) Control

OSD Control Board



MENU	Push -> OSD menu On/Off
SEL	Item Selection, Value Selection
UP	Item up Increase selected value
DOWN	Item down Decrease selected value

Mode State

MENU	Config	NAVI
Config	NAVI-RGB	KD900(WVGA)
Option	NAVI-AV	Default
Image	DVD	ELT-980XU Slim
Screen	DVB-T(IMB)	ELT-DVBT20
Parking	BlackBox	Default

First Menu Second Menu Third Menu

OSD(On Screen Display) Control

First Menu	Second Menu	Third Menu	Action
Option	RearCam-Type	OEM	Original Camera
		ExtDevice	Use aftermarket Rear camera
	RearCam-Power	ON	Rear camera get +12V consistently
		AUTO	Rear camera get +12V when reverse gear on
		OFF	Shut out the power supply.
	FrontCam-Type	OEM	Original Camera
		ExtDevice	Use aftermarket Front camera
	FrontCam-Power	ON	Front camera get +12V consistently
		AUTO	Front camera get +12V when reverse gear on
		OFF	Shut out the power supply.
	RearCam-RcvOpt	ON	Show Frontcam 25sec after rear mode.
		OFF	Default
	Reset	Excute	Option Menu all Reset

OSD(On Screen Display) Control

NAVI-RGB menu

First Menu	Second Menu	Third Menu	Action
Image	Brightness		Adjust the value of brightness
	Contrast		Adjust the value of contrast
	Color-RED		Adjust the value of RED
	Color-GREEN		Adjust the value of GREEN
	Color-BLUE		Adjust the value of BLUE
	Reset	Excute	Option Menu all Reset

DVD,DVB-T(DMB),NAVI-AV,REAR,FRONT menu

First Menu	Second Menu	Third Menu	Action
Image	Brightness		Adjust the value of brightness
	Contrast		Adjust the value of contrast
	Saturation		Adjust the value of Saturation
	Hue		Adjust the value of Hue
	Sharpness		Adjust the value of Sharpness
	Reset	Excute	Option Menu all Reset



<< Brightness >>



<< Saturation >>



<< Contrast >>

OSD(On Screen Display) Control

OSD Setting- Screen Mode

- Horizontal
- Vertical
- Scaler X Up
- Scaler X Down
- Scaler Y Up
- Scaler Y Down

MENU	Screen	NAVI
Config	Horizontal	50
Option	Vertical	50
Image	Scale X Up	50
Screen	Scale X Down	50
Parking	Scale Y Up	50

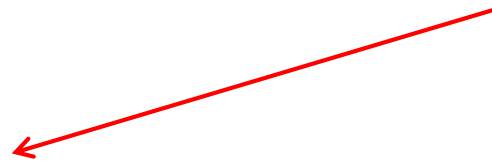
OSD(On Screen Display) Control

OSD Setting - Parking Mode On/Off

MENU	Parking REAR	
Config	Line Display	Off
Option	Warnings Lang	English
Image	Horizontal	<input type="text" value="50"/>
Screen	Vertical	<input type="text" value="57"/>
Parking	Transparency	<input type="text" value="100"/>



MENU	Parking / Line Display REAR	
Config	Line Display	Off
Option	Warnings Lang	English
Image	Horizontal	<input type="text" value="50"/>
Screen	Vertical	<input type="text" value="57"/>
Parking	Transparency	<input type="text" value="100"/>



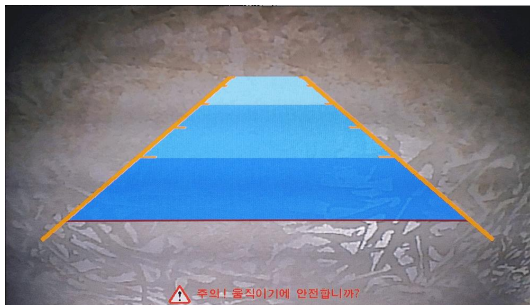
MENU	Parking / Line Display REAR	
Config	Line Display	On Off
Option	Warnings Lang	English
Image	Horizontal	<input type="text" value="50"/>
Screen	Vertical	<input type="text" value="57"/>
Parking	Transparency	<input type="text" value="100"/>



MENU	Parking / Line Display REAR	
Config	Line Display	On Off
Option	Warnings Lang	English
Image	Horizontal	<input type="text" value="50"/>
Screen	Vertical	<input type="text" value="57"/>
Parking	Transparency	<input type="text" value="100"/>

Parking Line ON

Parking line OFF



On Reverse mode enter this OSD menu

OSD(On Screen Display) Control

OSD Setting - Warnings Language Change

MENU	Parking / Warnings Lang	REAR
Config	OPS Display	English
Option	Line Display	中文
Image	Warnings Lang	한국어
Screen	Horizontal	台灣
Parking	Vertical	Россия

English

Check entire surroundings!

中文

请注意车辆周围环境!

한국어

차량 주변을 전부 확인

台灣

請注意車輛周圍環境!

Россия

Следите за всем окружением автомобиля!

日本

周辺の安全を確認

OSD(On Screen Display) Control

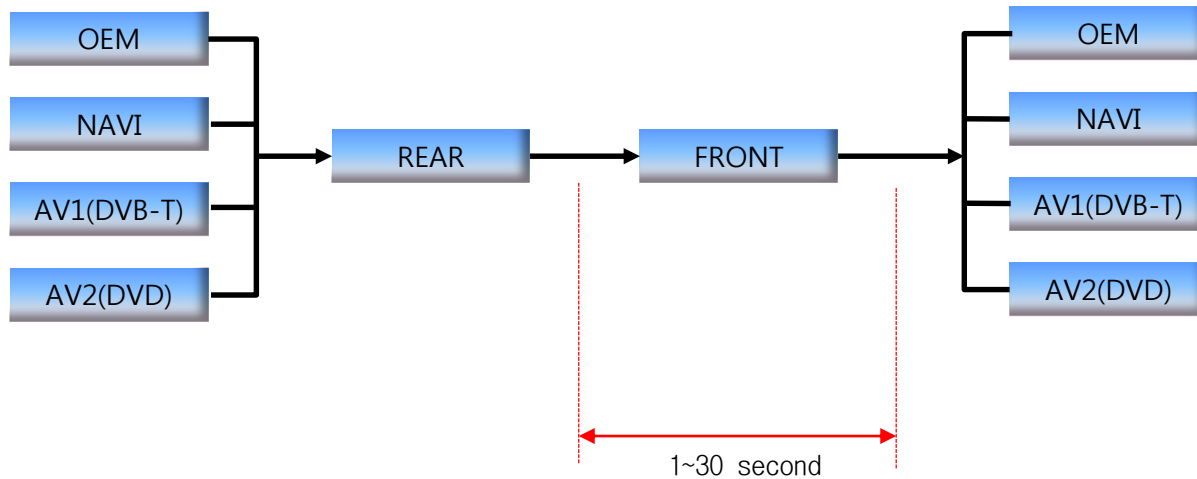
OSD Setting - Front Camera Auto Mode

- Option -> RearCam-RcvOpt -> 0 second = RearCam-RcvOpt menu OFF

1~30 second = RearCam-RcvOpt menu ON & time control

MENU	Option / RearCam-RcvOpt	REAR
Config	FrontCam-Det	ExtWire
Option	RearCam-RcvOpt	<input type="text"/> 0s
Image	AV Out	USER
Screen	Reset	Execute Cancel
Parking		

MENU	Option / RearCam-RcvOpt	REAR
Config	FrontCam-Det	ExtWire
Option	RearCam-RcvOpt	<input type="text"/> 30s
Image	AV Out	USER
Screen	Reset	Execute Cancel
Parking		



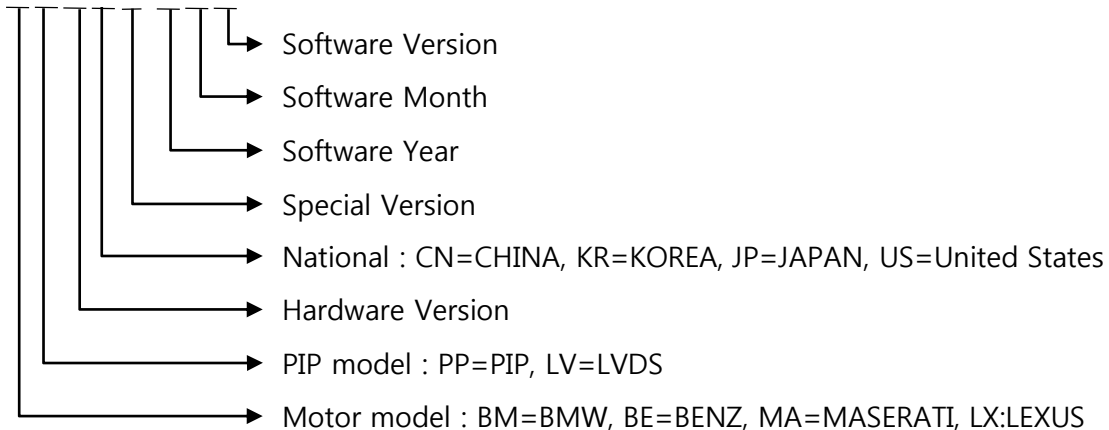
OSD(On Screen Display) Control

OSD Setting - Utility Mode

MENU	Utility / Factory Reset	REAR
OSD	Factory Reset	Execute Cancel
Utility	Version	BEPP06SGX-130950

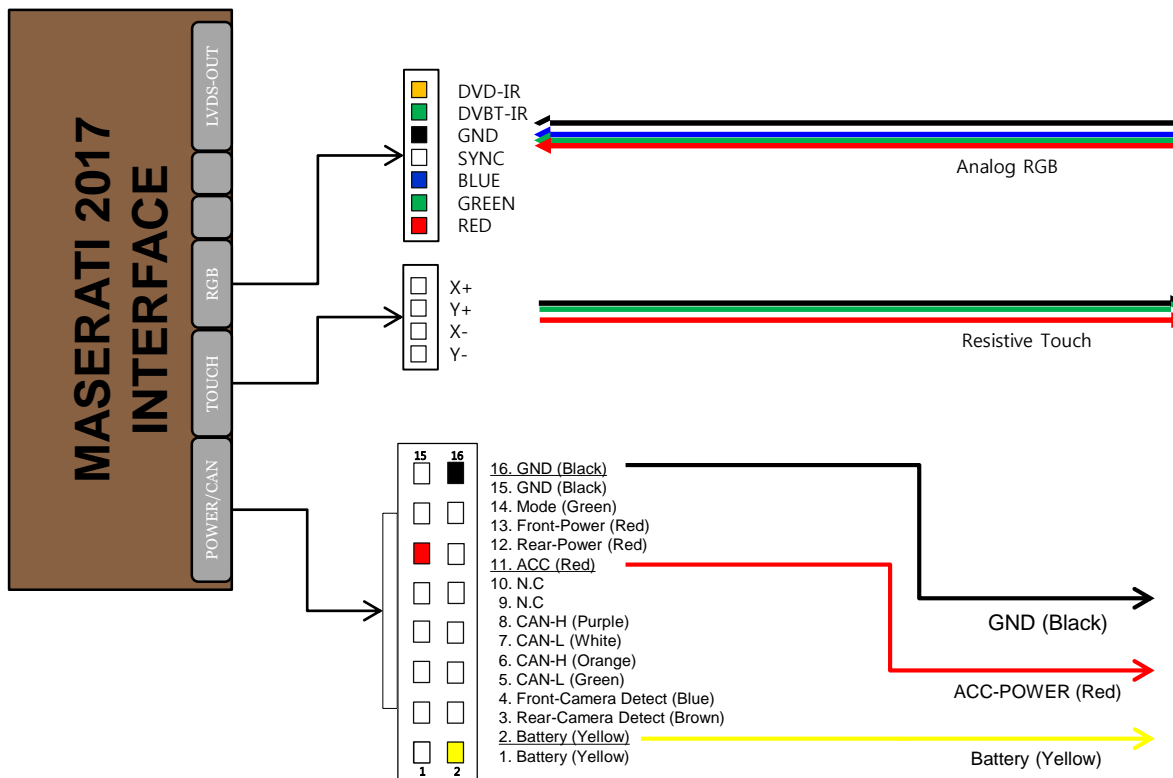
- Factory Reset : Execute - Reset All (Setting Default)
- Version : FW Version
Finish update FW, check the FW version

Last Source : BEPP06SGX-130950



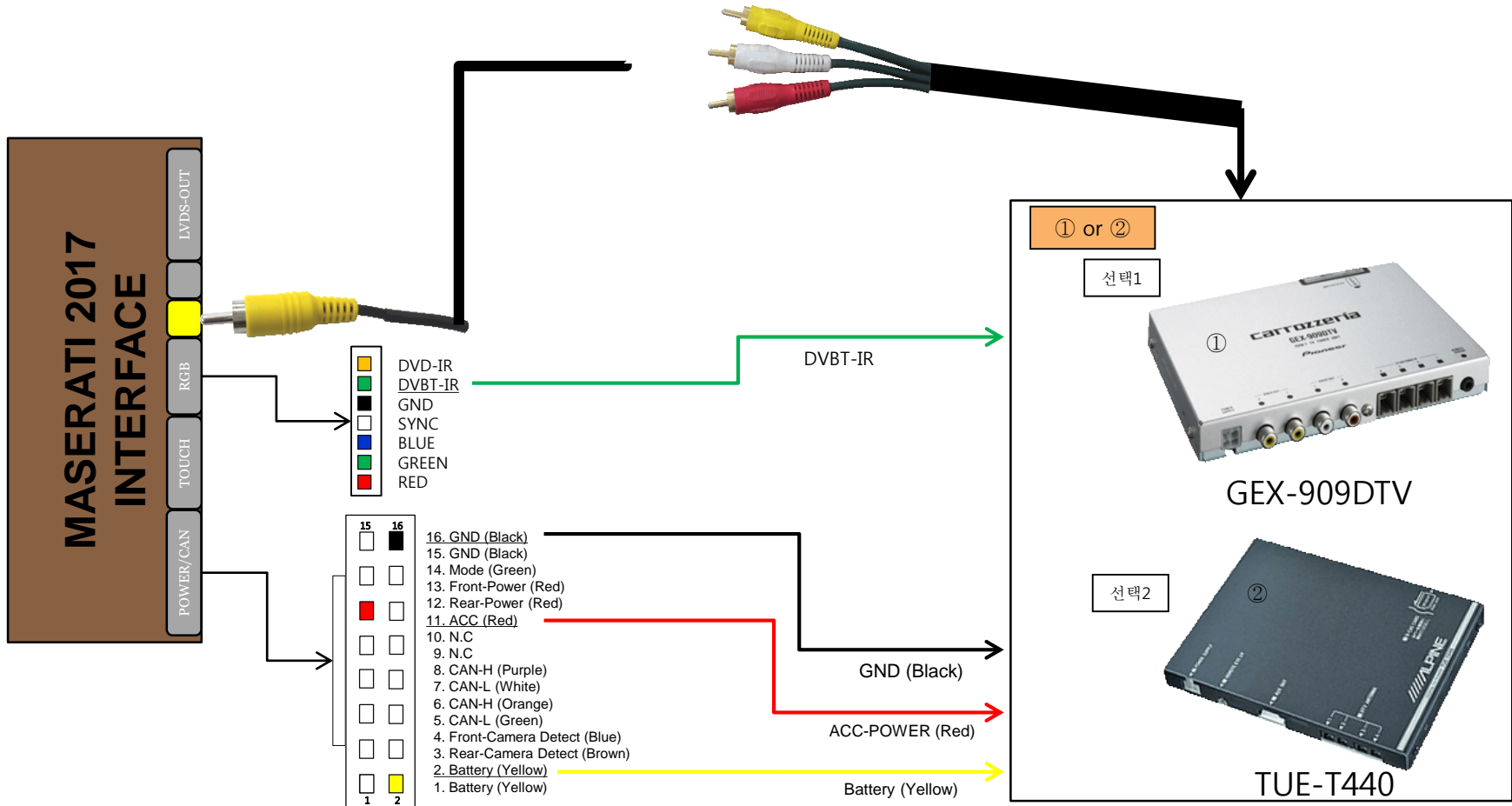
Install Manual

1. Installation Navigation Connection



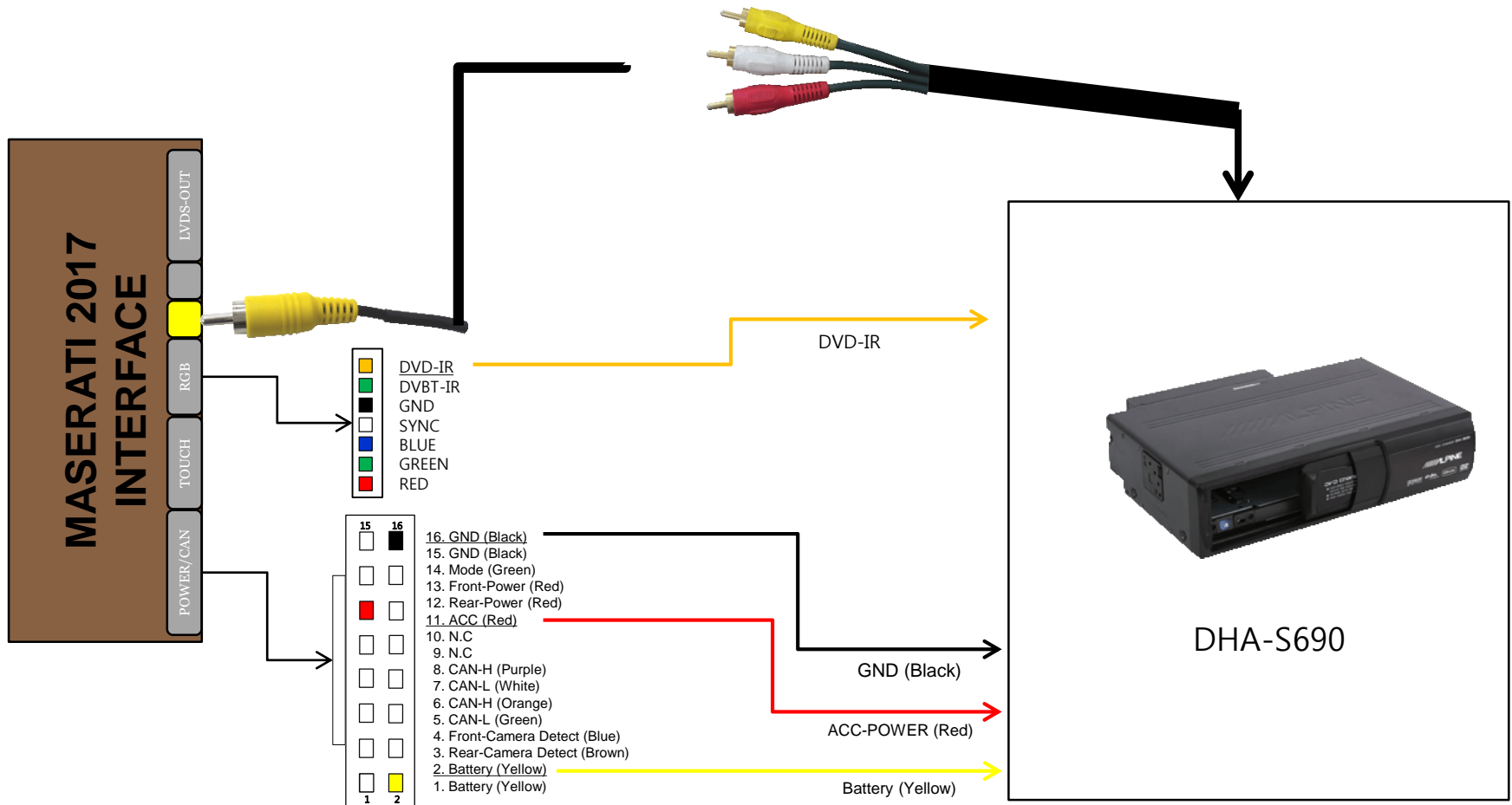
Install Manual

2. Installation DVB-T Remote Control Connection



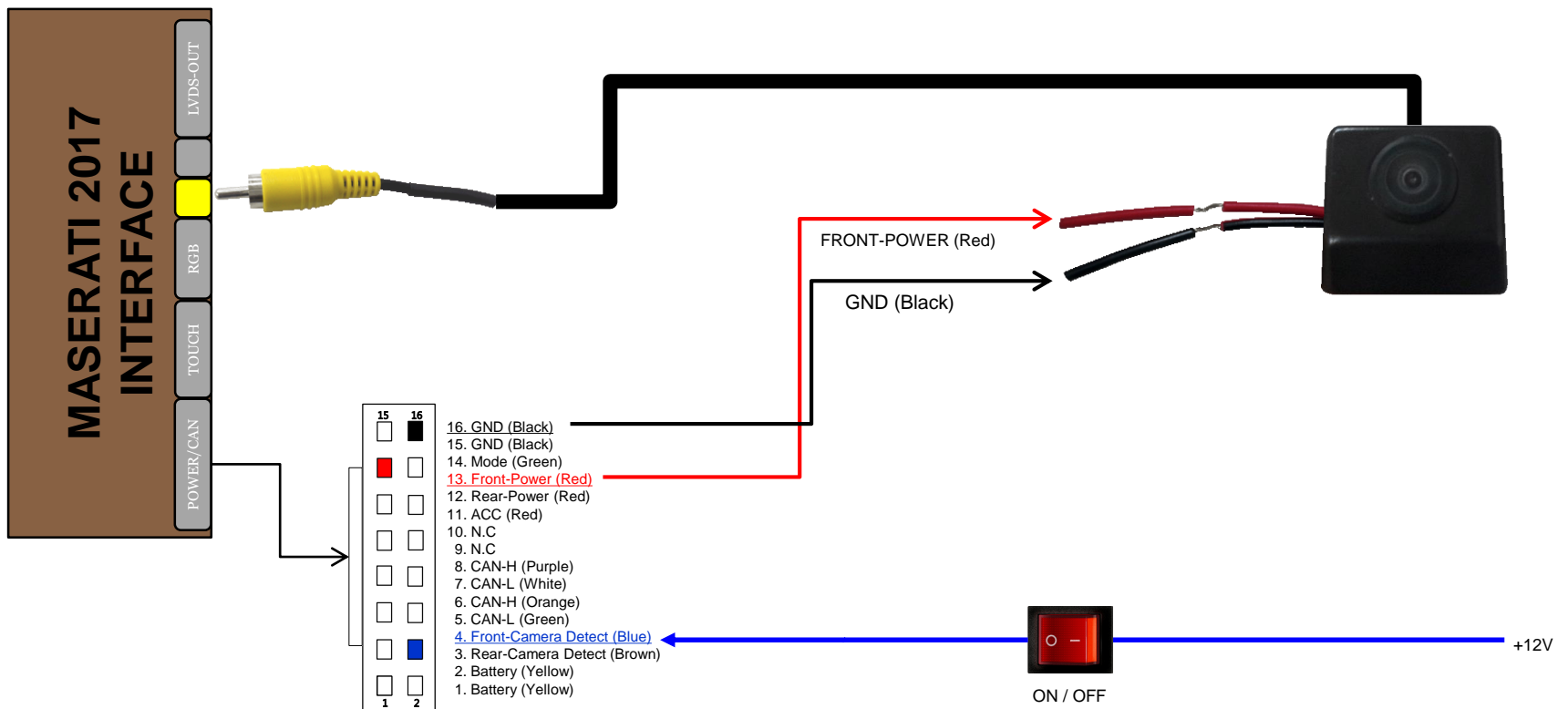
Install Manual

3. Installation DVD Remote Control Connection



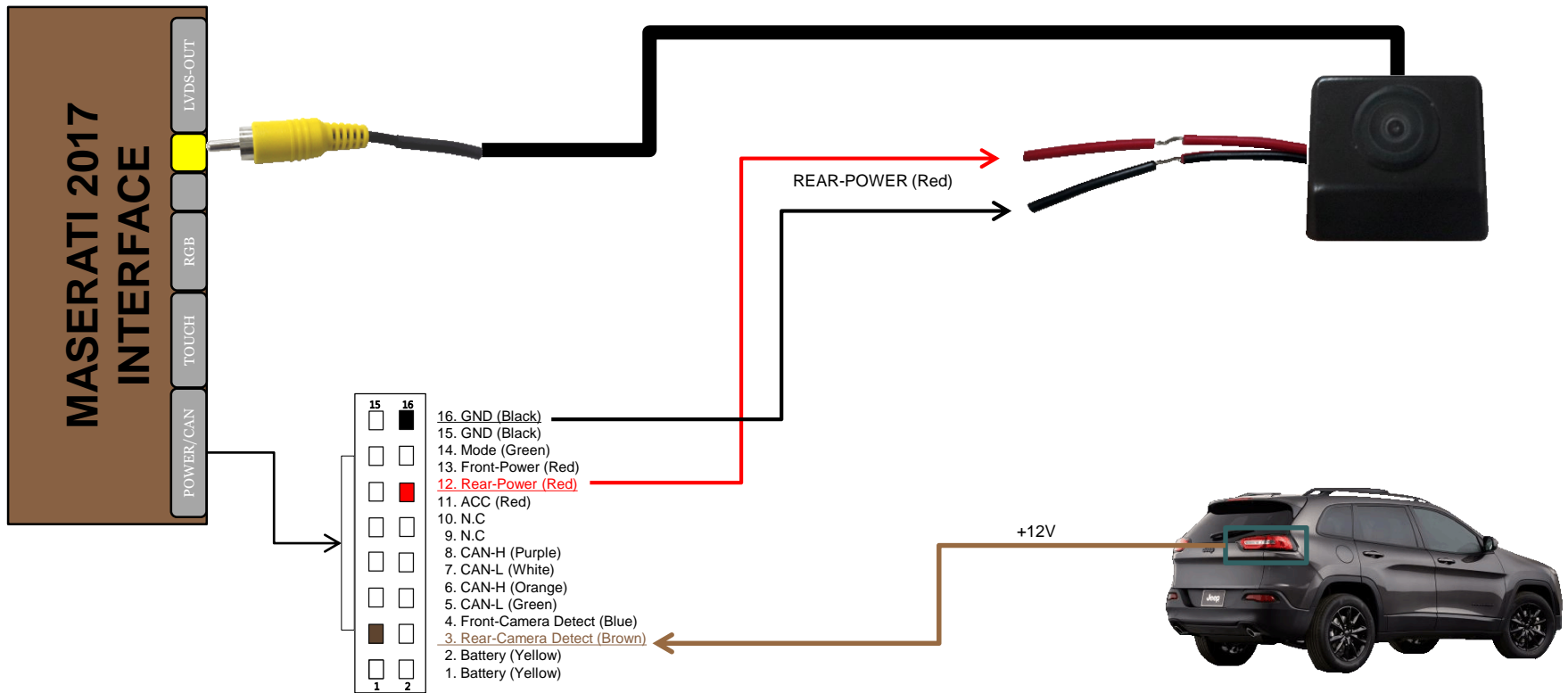
Install Manual

4. Installation External Front Camera Connection



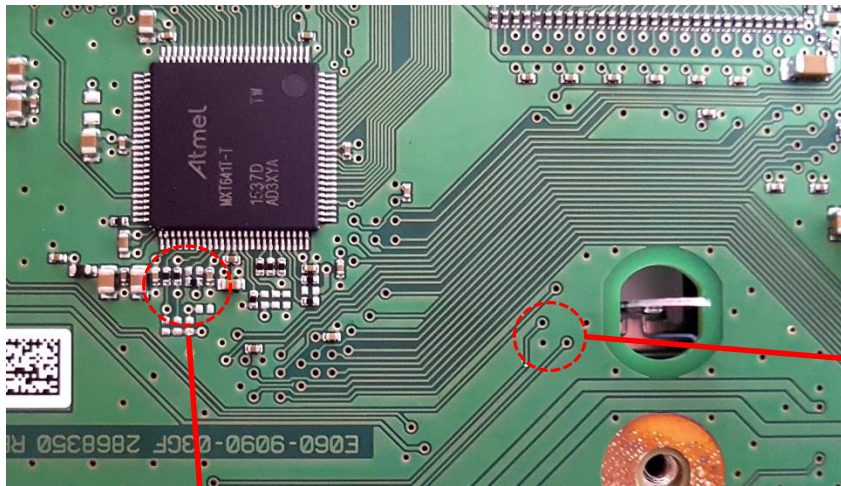
Install Manual

5. Installation External Reverse(Rear) Camera Connection

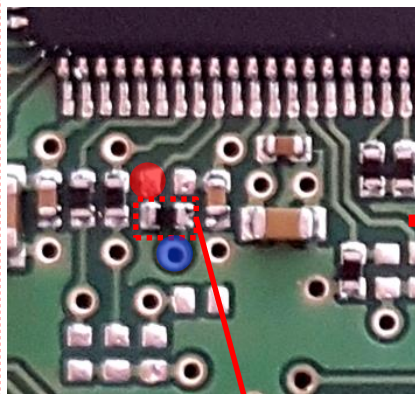
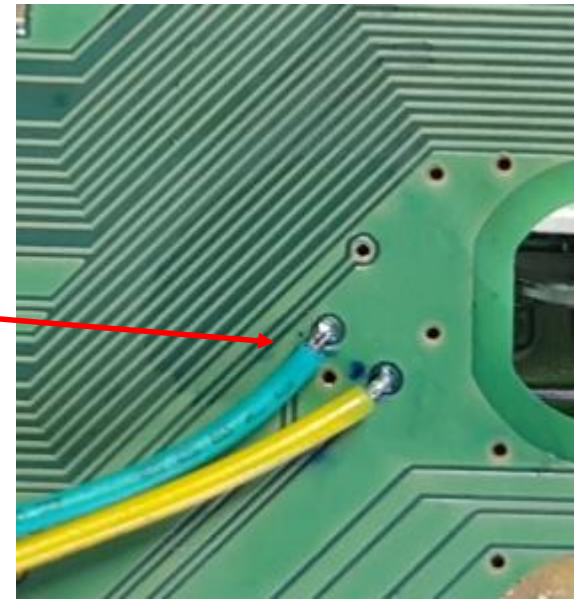


Install Manual (Use Navigation)

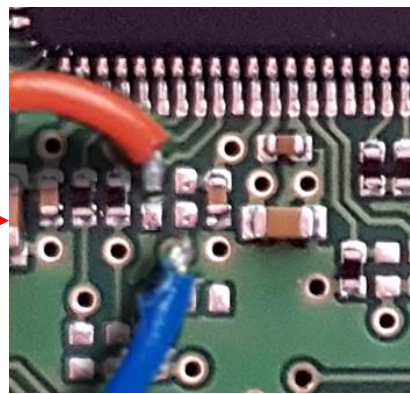
6. Levante Touch in/out cable connection – *When use AV or Rear CAM, DO NOT WORK THIS*



Before work ↑



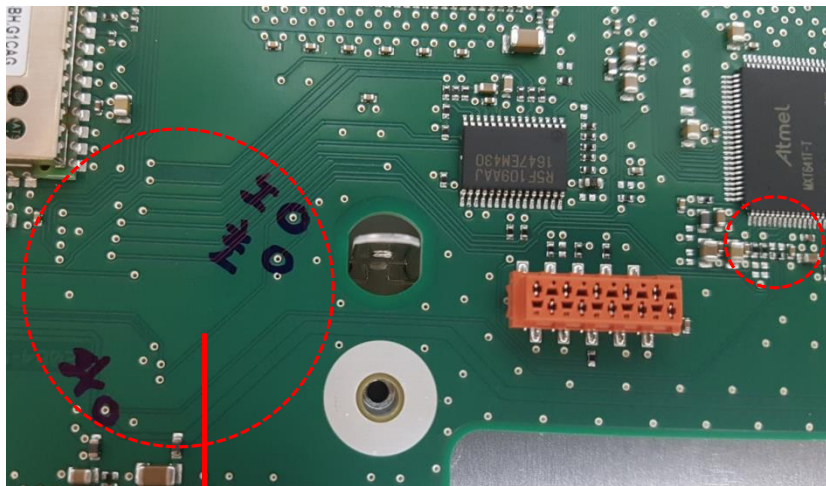
Take out (0 ohm) resistor



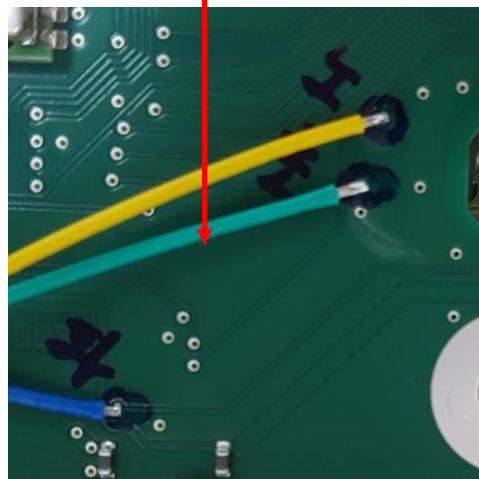
Soldering our cable to here

Install Manual (Use Navigation)

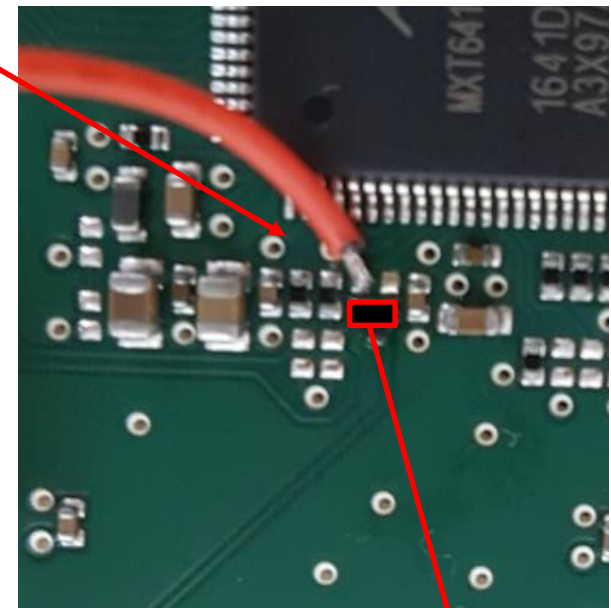
7. Quattroporte Touch in/out cable connection – **When use AV or Rear CAM, DO NOT WORK THIS**



Before work



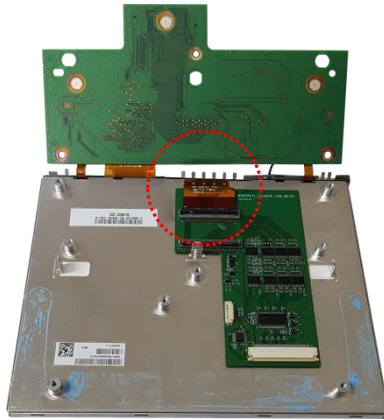
Soldering our cable to here



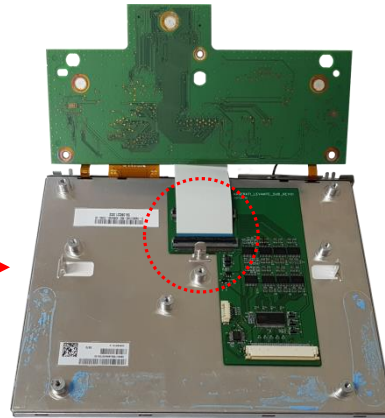
Take out (0 ohm) resistor

Install Manual

8. LVDS FPC cable connection



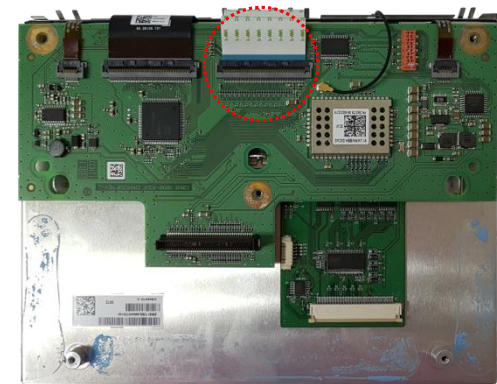
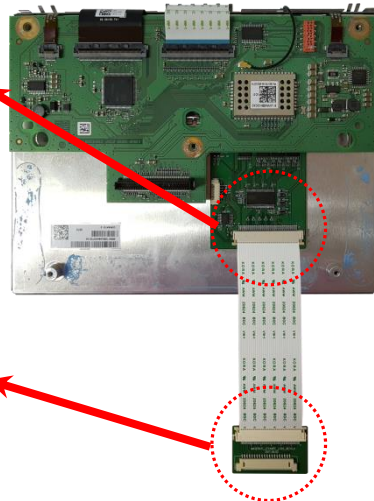
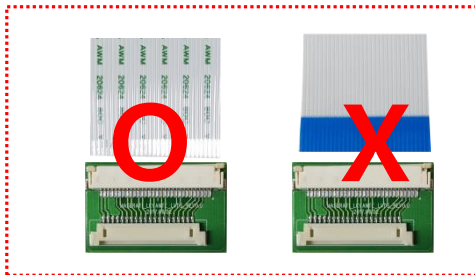
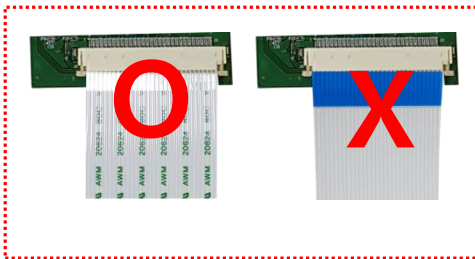
Connect original FPC Cable



Connect Our FFC Cable



Connect Our FFC Cable



Check the blue color on the cable

Q & A

1. If Interface has a problem, Please check LED.



- ACC on (12v), If Interface does not have a problem; GREEN LED is blinking every 1 sec..
- RED LED is turn on (not blinking), Interface has a problem.
- RED LED is turn off every 1 sec, there is no input.
- RED LED and GREEN LED both are not turn on, check the CAN or ACC connection.

2. Q : LCD screen black

A : LVDS Cable problem or, connection problem.

3. When DTV or DVD mode, cannot control with I-Drive

- Check IR cable, and DTV or DVD device' s ground cable and Interface ground cable join together with using extra cable.
- Check device in OSD menu